

# XT3500

## Document and Book Scanner

Scan a Book Without Touching any Button

Scanning A4 Page Within 2 Seconds



LED

Zero  
Boundary

Auto  
Detect

3  
buttons

1200  
DPI

CCD

8000  
daily  
Scan

Auto  
Scan

Warm  
up  
Free

E-book  
Mode

OCR engine powered by **ABBYY**<sup>®</sup>



**Three programmable function buttons** on the scanner panel provide you an intuitive and easy way to access scanner functions.

## New Solution for Scanning Thick Documents



The XT-3500 patented Zero Boundary™ design eliminates the problem of scanning bound pages with text and pictures close to the inner margin of a book or magazine. You get easy-to-read text and clear images across the entire page.

No more distortions, no more blurs

Table 11 Effect of temperature on the corrosion rate of zinc immersed for 15 days in water saturated with oxygen			
Temperature (°F)	Temperature (°C)	Corrosion rate (mg/ft²/d)	Corrosion rate (mm/y)
30	8.9	3.9	0.0001
40	11.1	12.7	0.0003
50	10.0	76.2	0.0021
60	15.6	577.0	0.0161
70	21.1	460.0	0.0129
80	26.7	96.7	0.0027
90	32.2	21.5	0.0006

Conventional scanner

XT-3500 with Zero Boundary design

## 8000 Pages Daily Duty

With heavy duty design, XT3500 supports daily scan up to 8000 pages per day.

**8000 Pages / Day**

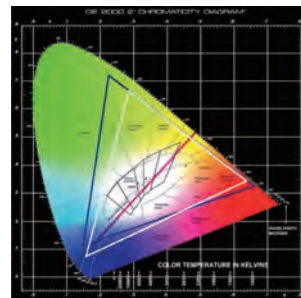


## Auto Detect Sensor

With patented design, XT3500 can detect the document on the scanning area and scan document or books automatically.

## LED light source has wider NTSC range to provide better image performance

Tri-wave-led, the white line in the picture, has the wider NTSC range. The blue line is full range of NTSC. Red line is dual-wave-length LED can scan.



## Specifications

Scanner Type	Resolution
Flatbed color document scanner	1200 dpi
Image Sensor	Scanning Area
CCD	8.5" x 11.7" / 216 mm x 297 mm
Light Source	Dimensions (L x W x H)
LED	17.5" x 11" x 3.54" / 443.5 mm x 278.5 mm x 90 mm
Scanning Mode	Weight
Color, grayscale, and B&W in a single pass	6.6 lbs. / 3 kg
Input: 48-bit color; 16-bit grayscale	Environment
Output: 24-bit color; 8-bit grayscale	Operating Temperature: 50°F ~ 104°F / 10°C to 40°C
Scanning Speed	Relative Humidity: 20% to 85%
1"6 @ 200 dpi	

## System Requirements

- CD-ROM drive (for installing software)
  - Color monitor with 24-bit color capability
  - 512MB RAM
- PC and compatibles
- Pentium IV PC or later with USB port
  - Microsoft Windows XP / Vista / Windows 7

## Included Software

- ScanWizard DI
- InterVideo MediaOne Gallery
- ABBYY FineReader Sprint OCR
- Adobe Acrobat Reader

For more information about this product, please contact your local Microtek sales or dealers.



© 2011 Microtek. Microtek, ScanMaker, ArtixScan and ScanWizard are trademarks or registered trademarks of Microtek International, Inc. All other brands, product names and logos herein are trademarks or registered trademarks of their respective holders. Specifications, software bundles and accessories are subject to change without notice. Delivery of technical support services subject to change without notice. Not responsible for typographical errors. © 2011 Ingram Publishing, 022511

**MICROTEK INTERNATIONAL, INC.**

No. 6 Industry East Road 3, Science-Based Industrial Park, Hsinchu 300, Taiwan

Tel: 886-3-577-2155 Fax: 886-3-577-2598 <http://www.microtek.com>



## Scanwizard DI

Invented and owned by Microtek, ScanWizard DI has several handy functions for users to choose. Refer to the followings for the details.

### Auto Document Rotation



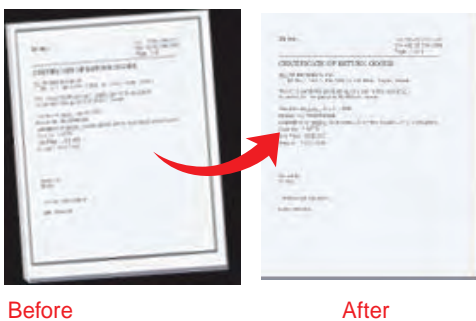
The Auto Document Rotation function enables the scanner to rotate each saved image into a readable direction automatically based on specified OCR language. Users do not need to rotate the document manually when scanning, saving time and energy.

### Remove Punch Hole



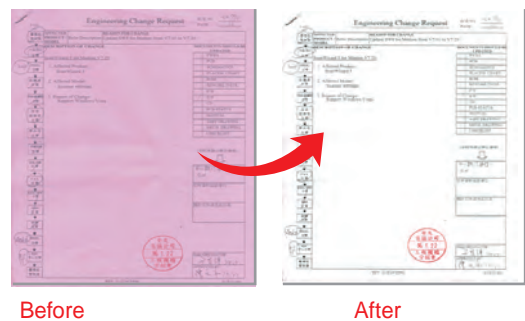
Some businessmen do not like scanned images, such as invoices or tickets, with numerous punch holes. The exquisite Remove Punch Hole function provided by the ScanWizard DI can handle and release these concerns easily.

### Auto-crop and Auto-deskew



In order to save people's vigor, the Auto-crop and Auto-deskew function enables Microtek's scanners automatically detect the size of the image and then crop the frame to fit the image. At the same time, they can also remove the unwanted black borders.

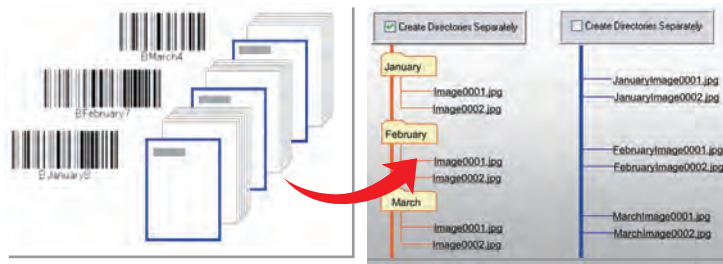
### Color Dropout



In most cases, users are pursuing clearer and more accurate appearance for scanned materials. Therefore, the color dropout function can help users to remove red, green and blue colors from the original documents and hence able to improve the readability of them.



## Barcode Separator



Before

After

The Barcode Separator function can recognize the barcode number on an invoice or a receipt and then lets the scanned image saved in a file or directory using the barcode number. It helps office and factory users to save time on categorizing piles of invoices or receipts.

## Remove Blank Page



Before

After

The Remove Blank Page function can remove the blank pages, helping users to avoid examining a pile of documents manually after the scanning is done. Therefore, users can scan documents in more comfortable and satisfactory ways, no matter how massive of documents are.

## Descreen

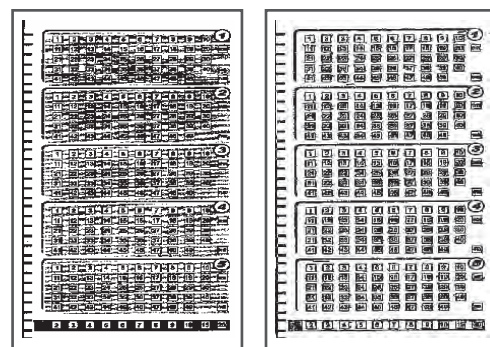


Before

After

The Descreen function can eliminate the moiré patterns when you scan a screened original, such as pictures from the newspapers or magazines. Hence, users can get pristine and clear scanned images.

## Smart Threshold



Before

After

The SmartThreshold function enables Microtek's scanners to define the best level of a threshold used in high-contrast and black-and-white images automatically, improving the clearance and readability of black-and-white documents.